



The Art & Design courses encourage students to develop creative and expressive skills through an exploratory approach, experimenting with a range of different techniques and materials. Students are encouraged to develop their knowledge of Art & Design through practical and written work utilising traditional skills such as printmaking, painting and drawing and modern techniques like photography and digital applications. Art enhances fine motor skills, hand-eye coordination, problem solving skills, lateral thinking, complex analysis and critical thinking skills relevant to other subject areas. Grades in Art and Design are taken seriously by universities.

The UK's Creative Industries grew by 8.9 per cent in 2014 - almost double the UK economy as a whole and the arts and cultural industries represents £84 billion a year.

NATIONAL 4/5 ART AND DESIGN	
<p>REQUIREMENTS</p>	<p>You must have completed Art and Design in S3, or alternatively have completed Graphic Communication or Design and Manufacture in S3. If you do not have these subjects from S3, you must seek permission from the Faculty PT.</p>
<p>COURSE CONTENT</p>	<p>The National 4 (N4) & National 5 (N5) courses are very similar in format, allowing pupils to choose Art & Design without making any level distinction to begin with. Course level would be determined later through assessment of progress and attainment. Both courses contain two elements;</p> <p>Design Portfolio- previous projects have included graphic design and textile design.</p> <p>Expressive portfolio- portraiture or still life.</p> <p>Please follow the link below to access the SQA course support notes National Art and Design</p> <p>Design Unit Students will undertake a Design Unit selected by their Art teacher from a range of different Design disciplines. Design units model industry process and practice and are intended to provide students with a real world skillset. Candidates begin by researching an appealing theme and then working within the restrictions of a design brief, developing a range of design ideas before selecting a concept to develop into a final outcome for their client.</p> 

<p>COURSE CONTENT CTD</p>	<p>Expressive Unit Students produce an Expressive Unit selected from a recognised genre; portraiture, still life or landscape. Students are granted a great deal of personal freedom and begin by selecting a subject matter of interest followed by exploratory drawings, observational drawings, compositional studies, art critical work, development and a final outcome. A variety of different mark making materials are available- relief and mono-print, acrylic and watercolour paint, charcoal and oil pastel etc.</p>  <p>Critical Studies Element Candidates produce annotated sheets describing social and cultural factors which have influenced the artists/ designers development as well as an analysis of the artists use of visual elements and composition/ layout. Students are encouraged to form their own opinions and express themselves using art and design specific vocabulary.</p>
<p>ASSESSMENT</p>	<p>Candidates produce a portfolio and will be submitted to the SQA for external marking. The portfolio will consist of both Design and Expressive elements.</p> <p>Candidates will also sit a written exam. For more details on Assessment requirements please follow the link below: National Art and Design Assessment</p>
<p>PROGRESSION / NEXT STEPS</p>	<p>This course is offered at Higher level, any student capable of achieving a National 5 in Art and Design should consider studying for Higher. Pupils may wish to discuss relevant work experience/placements with Faculty staff and their Guidance Teacher.</p> <p>Careers include Architecture, Advertising, Animation, Ceramics, Cartoonist, Costume Design, Filmmaker, Floristry, Fashion Design, Garden Design, Graphic and Website Design, Illustration, Interior Design, Jewellery, Photographer, Publishing, Product Design, Special Effects Work, Tatoonist, Teaching, Tailoring, Typographer, Textile Design, Theatre Set Design and Visual Merchandising/ Marketing.</p> <p>See the link below for further information: National 5 Art and Design</p>

HIGHER ART AND DESIGN

REQUIREMENTS

Pupils should have an A or B in Art and Design at National 5 or Design and Manufacture at National 5 or Graphic communication at National 5. In some **exceptional** cases students will be considered for entry to Higher without previous experience since S3.

If you do not have the required passes at A or B level, you must seek permission from the Faculty PT.

COURSE CONTENT

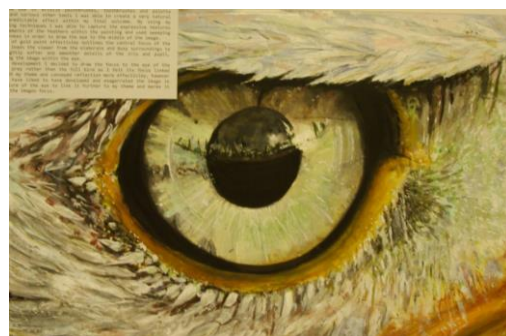
The course is made up of two main units plus the course assessment.

Please follow the link below to access the course support notes produced by the SQA: [Higher Art and Design Support Notes](#)

Expressive Activity (Higher)

This Unit helps learners to develop their personal thoughts and ideas in visual form. In the Unit, learners will develop critical understanding of artists' working practices and the social and cultural influences affecting their work. They will select

stimuli and produce investigative drawings and studies. They will develop and refine their expressive ideas and artwork, experimenting with and using a range of materials, techniques and/or technology in 2D and/or 3D formats. Previous projects have included portraiture, still life and landscape.



Design Activity (Higher)

In this Unit learners will plan, research and develop creative design work in response to a design brief. They will develop their creativity, problem solving and critical thinking skills as they consider complex design

opportunities, and work to resolve design issues and constraints. In the Unit, learners will develop critical understanding of designers' working practices and the social and cultural influences affecting their work. They will develop and refine their design ideas by experimenting with and using a range of materials techniques and/or technology in 2D and/or 3D formats. Previous projects have included graphic and lighting design.



<p>ASSESSMENT</p>	<p>The Higher course follows the same format as National 5 Art and design. Candidates produce a portfolio and sit a written exam too.</p> <p>The latest information from SQA can be found at www.sqa.org.uk</p> <p>For more details on Assessment requirements follow this link: Higher Art and Design Assessment</p>
<p>PROGRESSION / NEXT STEPS</p>	<p>This course is also offered at Advanced higher, and may lead also lead on to a college courses in Photography, Graphic Design, Fashion Design.</p> <p>Pupils may wish to discuss relevant work experience/placements with Faculty staff and their Guidance Teacher.</p> <p>Careers include Architecture, Advertising, Animation, Ceramics, Cartoonist, Costume Design, Filmmaker, Floristry, Fashion Design, Garden Design, Graphic and Website Design, Illustration, Interior Design, Jewellery, Photographer, Publishing, Product Design, Special Effects Work, Tatoonist, Teaching, Tailoring, Typographer, Textile Design, Theatre Set Design and Visual Merchandising/ Marketing.</p> <p>See the link below for further information: Higher Art and Design Careers</p>

ADVANCED HIGHER ART AND DESIGN	
REQUIREMENTS	You must have an A or B at Higher level to take this subject at Advanced Higher Level.
COURSE CONTENT	<p>This course follows a slightly different format to the Higher course. It focuses on either a Design unit OR an Expressive unit. The pupils produce a portfolio that is worth 60 marks and is externally marked by the SQA.</p> <p>Advanced Higher is a markedly different course to either the National or Higher course as students choose to specialise entirely in either Expressive or Design. The course emphasises independent learning, students select their focus and grading is weighted towards experimentation and development of processes rather than a single final outcome. The workload is considerably greater than higher and requires significantly more time.</p> <p>Portfolio (60 marks) 2000 word written assignment (30 marks) Evaluation (10 marks)</p>
ASSESSMENT	For further information on the Assessment requirements please follow this link: http://www.sqa.org.uk/sqa/48488.html
PROGRESSION / NEXT STEPS	<p>This course is well suited to those thinking about pursuing a University Course in Art and Design, or indeed further study at College.</p> <p>Pupils may wish to discuss relevant work experience/placements with Faculty staff and their Guidance Teacher.</p> <p>Careers include Architecture, Advertising, Animation, Ceramics, Cartoonist, Costume Design, Filmmaker, Floristry, Fashion Design, Garden Design, Graphic and Website Design, Illustration, Interior Design, Jewellery, Photographer, Publishing, Product Design, Special Effects Work, Tattooist, Teaching, Tailoring, Typographer, Textile Design, Theatre Set Design and Visual Merchandising/ Marketing.</p>